

£2,000 Per Calendar Month

Moneyfield Avenue, Portsmouth PO3  
6LA

**bernards**  
THE ESTATE AGENTS



## HIGHLIGHTS

- ❖ FOUR BEDROOM
- ❖ NEW BUILD TOWNHOUSE
- ❖ FARTHING ROW
- ❖ TWO PARKING SPACES
- ❖ GARAGE
- ❖ OPEN PLAN LIVING AREA
- ❖ THREE STOREYS
- ❖ TWO ENSUITE BATHROOMS
- ❖ MODERN FAMILY BATHROOM
- ❖ AVAILABLE NOW

### \*\*\*SPECTACULAR FOUR BEDROOM TOWNHOUSE AT MONEYFIELD MEWS\*\*\*

We are thrilled to welcome to the rental market, this beautiful four bedroom new-build townhouse, in the highly anticipated redevelopment of Moneyfields Football Club, to bring you Farthing Row.

Externally, this home is just one of twelve townhouses, finished to an exceptional standard, with the only the highest quality of design, build and materials used to create a wonderful family home. Arranged over three storeys and in excess of 1300SqFt, each home sees two private parking spaces, with the excellent addition of a garage to the rear.

The main reception measures over 36ft in length and it is the perfect space to entertain, with a

beautiful sky light and bi-folding doors, flooding the room with natural light. The kitchen area is also finished to a modern standard, with integrated appliances and ample work surface space. The ground floor of the home is completed a modern w.c

Three double bedrooms flooded with light occupy the first floor, with bedroom two enjoying its own ensuite bathroom, with bedrooms three and four being served by the family bathroom. Moving to the top floor, the master bedroom is an amazing size, with its own ensuite shower room and separate dressing area

We strongly recommend booking an internal viewing to fully appreciate this beautiful, new build home.

Call today to arrange a viewing  
02392 728090  
[www.bernardsea.co.uk](http://www.bernardsea.co.uk)







Call today to arrange a viewing  
02392 728090  
[www.bernardsestates.co.uk](http://www.bernardsestates.co.uk)





# PROPERTY INFORMATION

## KITCHEN/LOUNGE/DINER

17'4" x 36'6" (5.28m x 11.13m)

## W.C

5'7" x 3'2" (1.70m x 0.97m)

## BEDROOM ONE

10' x 20'7" (3.05m x 6.27m)

## ENSUITE

3'5" x 7'10" (1.04m x 2.39m)

## BEDROOM TWO

10'1" x 11'8" (3.07m x 3.56m)

## ENSUITE

7'6" x 3'4" (2.29m x 1.02m)

## BEDROOM THREE

13'1" x 8'10" (3.99m x 2.69m)

## BEDROOM FOUR

8'1" x 9'11" (2.46m x 3.02m)

## BATHROOM

6'11" x 6'11" (2.11m x 2.11m)

## Council Tax Band TBC

## Removal Quotes

As part of our drive to assist clients with all aspects of the moving process, we have sourced a reputable removal company. Please ask a member of our sales team for further details and a quotation.

## Right to Rent

Each applicant will be subject to the right to rent checks. This is a government requirement since February 2016. We are required to check and take a copy of the original version of acceptable documentation in order to adhere to the Right to rent checks. This will be carried out at referencing stage. Please speak to a member of staff for acceptable Identification.

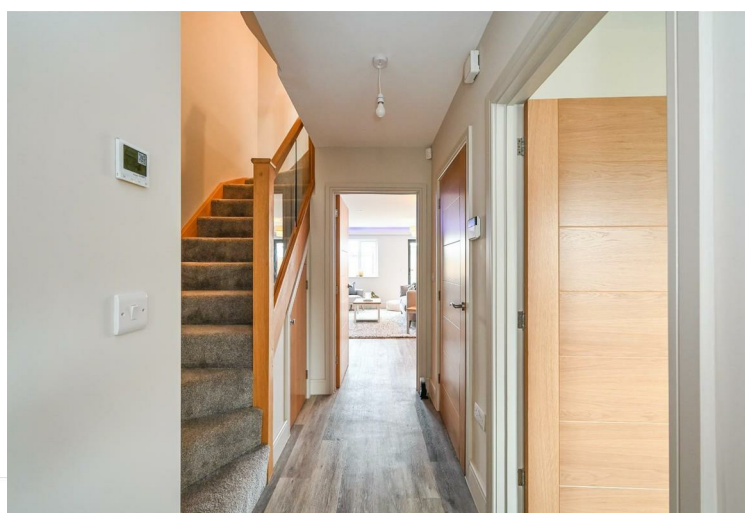
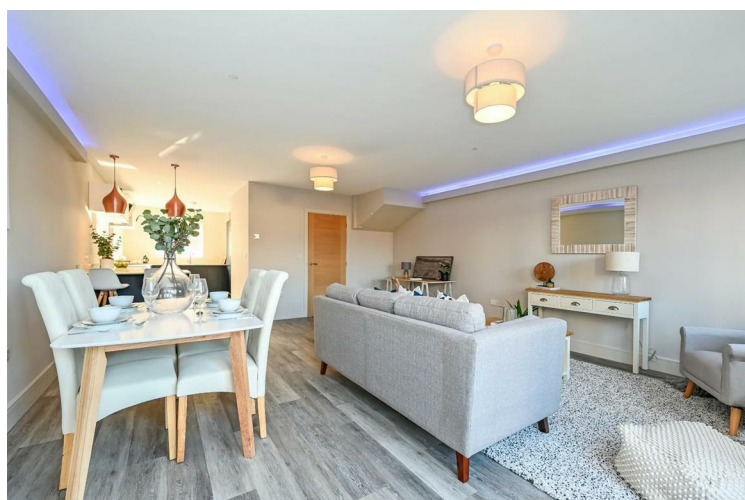
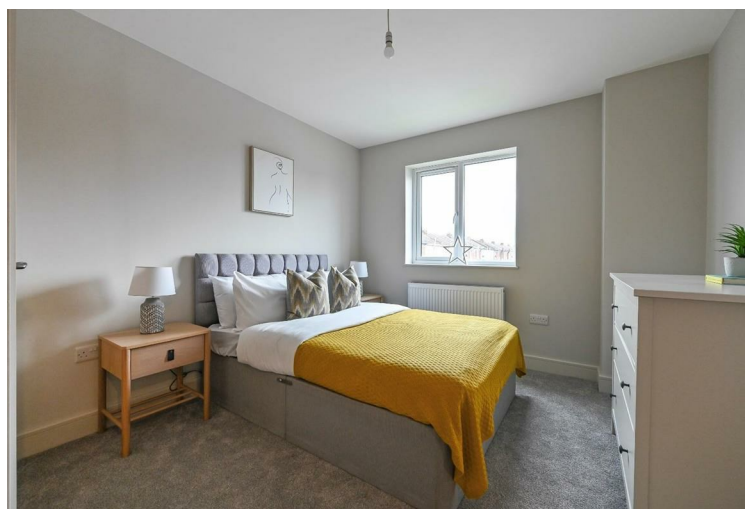
## Tenant Fees Act 2019

As well as paying the rent, you may also be required to make the following permitted payments.

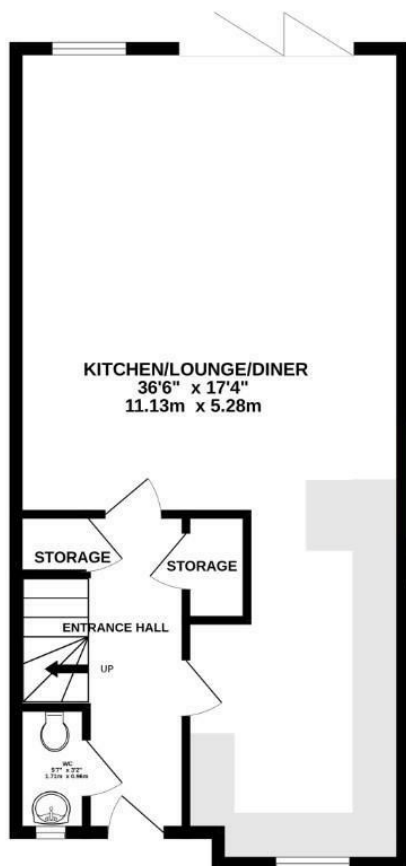
For properties in England, the Tenant Fees Act 2019 means that in addition to rent, lettings agents can only charge tenants (or anyone acting on the tenant's behalf) the following permitted payments:

- Holding deposits (a maximum of 1 week's rent);
- Deposits (a maximum deposit of 5 weeks' rent for annual rent below £50,000, or 6 weeks' rent for annual rental of £50,000 and above);
- Payments to change a tenancy agreement eg. change of sharer (capped at £50 or, if higher, any reasonable costs);
- Payments associated with early termination of a tenancy (capped at the landlord's loss or the agent's reasonably incurred costs);
- Where required, utilities (electricity, gas or other fuel, water, sewerage), communication services (telephone, internet, cable/satellite television), TV licence;
- Council tax (payable to the billing authority);
- Interest payments for the late payment of rent (up to 3% above Bank of England's annual percentage rate);
- Reasonable costs for replacement of lost keys or other security devices;
- Contractual damages in the event of the tenant's default of a tenancy agreement; and
- Any other permitted payments under the Tenant Fees Act 2019 and regulations applicable at the relevant time.

Energy Efficiency Rating		
	Current	Potential
Very energy efficient - lower running costs		
(92 plus) A		
(81-91) B		
(69-80) C		
(55-68) D		
(39-54) E		
(21-38) F		
(1-20) G		
Not energy efficient - higher running costs		
England & Wales		
EU Directive 2002/91/EC		



GROUND FLOOR  
620 sq.ft. (57.6 sq.m.) approx.



1ST FLOOR  
473 sq.ft. (44.0 sq.m.) approx.

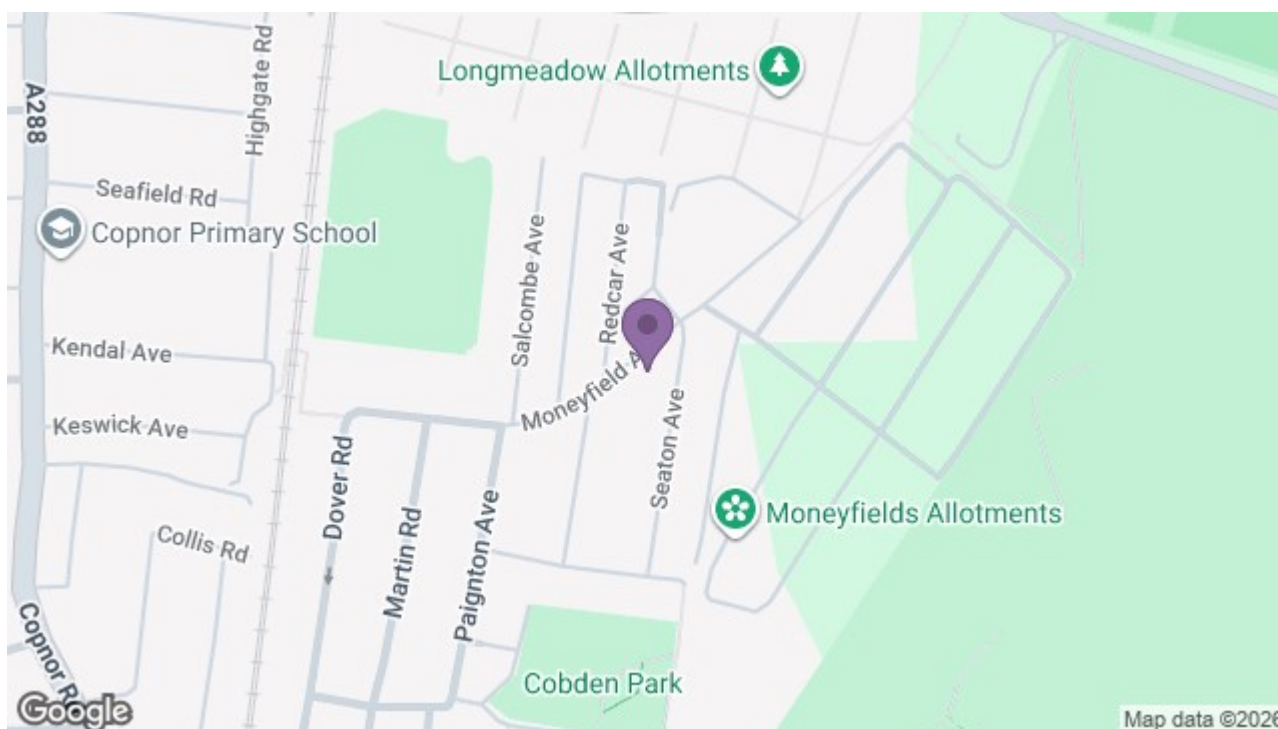


2ND FLOOR  
293 sq.ft. (27.2 sq.m.) approx.



TOTAL FLOOR AREA : 1387 sq.ft. (128.8 sq.m.) approx.

Whilst every attempt has been made to ensure the accuracy of the floorplan contained here, measurements of doors, windows, rooms and any other items are approximate and no responsibility is taken for any error, omission or mis-statement. This plan is for illustrative purposes only and should be used as such by any prospective purchaser. The services, systems and appliances shown have not been tested and no guarantee as to their operability or efficiency can be given.  
Made with Metropix ©2023



129 London Road, Portsmouth, Hampshire, PO2 9AA  
t: 02392 728090

